



PRACTICE PROFILE



Leading lighting expertise

Our Creative Director Hugo Fleming realised the power and beauty of light and how it can effect interiors and exterior spaces at Central St Martins.

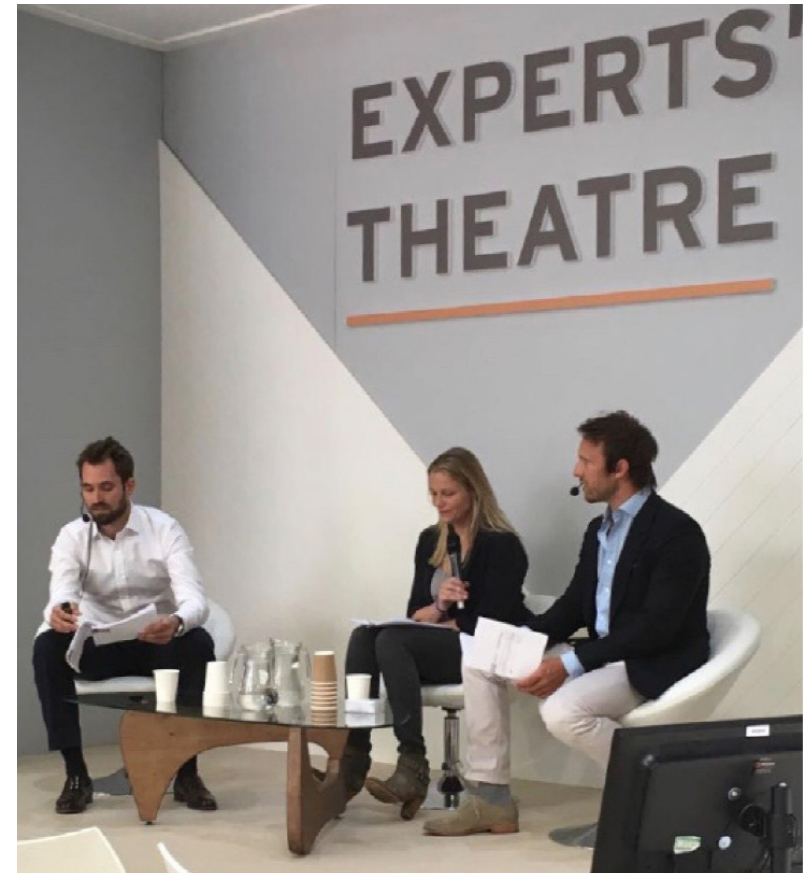
Following this, under the tutelage of Sally Storey who was a pioneer of the modern lighting industry in the UK at John Cullen Lighting/Lighting design International. Hugo was able to transfer a primarily creative degree into a working practice, bringing a different perspective to lighting design which was previously realised from a traditional engineers perspective.

Following this, under the supervision of Paul Traynor at Light Bureau who offered more of a purist philosophy to lighting focusing on hospitality, commercial and exterior spaces, Hugo expanded his technical knowledge and enhanced his creative flare and design language to become an accomplished Senior lighting designer during this time he took on the responsibility of setting up and building the residential lighting department winning and designing a great deal of high profile projects.

Chiaroscuro Lighting Design ("The contrast between dark and light") was set up in 2008 focusing specifically on super prime residential interiors and exteriors which also lead into restaurant design for Gordon Ramsay and more commercial projects following his time as Light Bureau.

In 2013 Hugo Light Design Ltd was created which began to branch into more large scale commercial projects as the team developed, specifically focusing on new LED technology which has enabled smaller carbon footprints, reduced power consumption, and general wellbeing and human centric lighting providing a healthier more enjoyable environment for his clients through light.

Over the last 20 years Hugo has worked in the lighting industry and lead an ever changing creative and multinational team to achieve spectacular results in all sectors of lighting design, employing architects, engineers, product designers and fine artists/ sculptors.



HUGO LIGHT DESIGN Ltd

UNIT 40, BATTERSEA BUSINESS CENTRE
99-109 LAVENDER HILL
LONDON
SW11 5QL

PRINCIPLE : MR HUGO FLEMING

O: +44 (0) 20 7924 4504

M: +44 (0) 7970 291 411



HUGO LIGHT DESIGN

What we do / Our Approach

At Hugo Light Design, we use light to support architectural objectives for buildings and spaces, helping to create interior and exterior environments that perform to precisely defined criteria.

We work in many different contexts specialising in residential projects but also including retail schemes, exhibitions, hotels & leisure facilities, landscapes and gardens, historic buildings and conservation.

Our designs are integral to the experience of each project. They articulate space and objects and display texture and colour. With their capacity to add accent and mood, they enrich rooms and buildings, streets and public spaces.

We work as key members of the project delivery team alongside architectural design/landscape design/interior design/mep Consultant and project management disciplines to ensure seamless integration.

we as a company focus about 60% of our work on residential interiors and exteriors and have an in depth understanding of what people in general want to achieve from this type of work.

Sustainability

Sustainable design starts with establishing the incentives and constraints of each project, and by setting challenging targets for building construction and performance.

Recognising the importance of energy efficient lighting to long-term building performance, we have developed our own sustainability objectives, which stipulate the use of optimum efficiency lamps, controls and luminaries for Human Centric Lighting Design promoting health in both workplaces and in private homes. A continual process of appraisal ensures we keep abreast of products and techniques worldwide. We aim to lead our industry in this.

Hugo Light Design systems contribute to overall sustainable practice by being flexible and easy to use and maintain. After hand-over, our support to building users includes advice on settings, configurations and day to day operation including early fault finding and resolution prior to clients realising it has happened.

Partnerships

Hugo Light Design brings an informed and impartial approach to the production of lit spaces and surfaces. We work closely with our clients and fellow members of the design and construction team bringing some playfulness in to the fairly gray world of electrical engineering taking the time to understand their varied objectives and constraints.

We ensure both lighting quality from specified manufacturers who we have had up to a 20 year working relationships with integrating equipment into the structure of the architecture of a space wherever possible considering the overall building services design.

Our partnership philosophy is based on collaboration, great communication and an a great enjoyment of the design process, this results in long-lasting associations. We can contribute to every stage of a project from performance specification to implementation and commissioning. Our

Successful partnerships

Nicola Harding and Co
CPK Interiors
Susie Atkinson Design
David Collins Studio
John Field Studio
James Gorst Architects
Make Architects
Plincke Landscapes
USH Architects
Dan Brill Architects
St George
Taylor Howse Design
Knight Harwood

Tom Ford International
Bryan O Sullivan Studio
The Maybourne Group
FSC Consulting
Maximus LTD
Coast Developments LTD
Wolfe Architects
Kenny Sykes Architects
Edward Pearce Engineers
PATALAB
Earl Crowne Ltd
UNTOLD Interiors
Annabel Hickton Designs

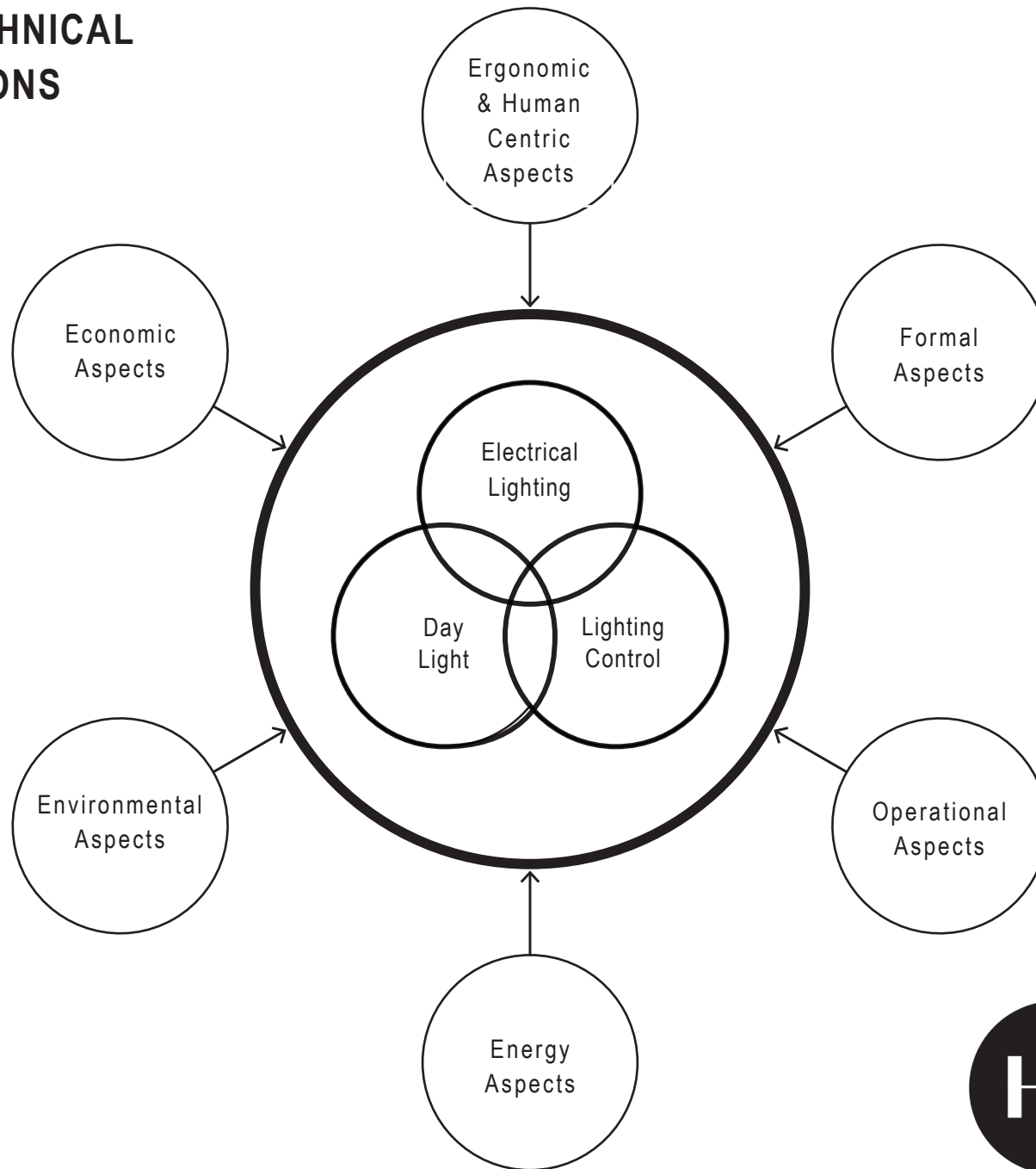
Goldstein Ween Architects
Inside And Out Design
Architonics
Greg and Lucy Rusedski
Martin Ashley Architects
Mc Vitty LTD
Snell David Architects
Mr Nicholas Coleridge
Bennett Design
Todhunter Earle Interiors
Morton Designs
P & N Decorations
Caybec UK Services LTD

RT Harris and Son
Annabel Elliott LTD
Sloane Management
Dolby Investments
Haberdashery London
Longshot Ltd
Henry Prideaux Design
The Story Studio
Behind The Door
The Little Door Company
Anna Haines Designs
Martin Kemp Design
Guinness Shanghai

McAlpine Group
The Third Space
OPI
NANU Group
Sincera Design
The Connaught
Claridges
The Savoy
Gordon Ramsay
Goddard & Studio
Albion Nord
Angus Reid Projects
Aztec Interiors

Squire & Partners
Susie Atkinson Design
Studio Otto
Beaverbrook Hotel & Spa
Cashel Palace Ireland
City Inc

DESIGN & TECHNICAL CONSIDERATIONS



HUGO LIGHT DESIGN

DESIGN PROCESS

FULL SCOPE OF DESIGN PACKAGE
RECEIVED FROM CLIENT AND FEE
SUBMITTED BY HUGO LIGHT DESIGN
LTD

ACCEPTANCE OF FEES BY CLIENT

ARCHITECTURAL, INTERIOR AND EXTERNAL
DESIGN ISSUED TO HUGO LIGHT DESIGN LTD

PROJECT BRIEFING, MOBILISATION FEE SENT
AND PHASES OF PROJECT MAPPED OUT
RIBA STAGE 1

DETAILED DESIGN AND TECHNICAL STAGE FOR
TENDER OF EACH PHASE PRESENTED IN STAGES
RIBA STAGE 3 & 4

RUN THROUGH DESIGN ON SITE WITH
CONTRACTOR AND ELECTRICAL CONTRACTOR
RIBA STAGE 5

IN USE STAGE - SNAGGING AND SCENE
TWEAKING
RIBA STAGE 6&7

PRESENTATION OF CONCEPTS FOR
EACH PHASE AS AGREED WITH CLIENT
RIBA STAGE 2

Bi monthly design team meetings per phase as agreed with client

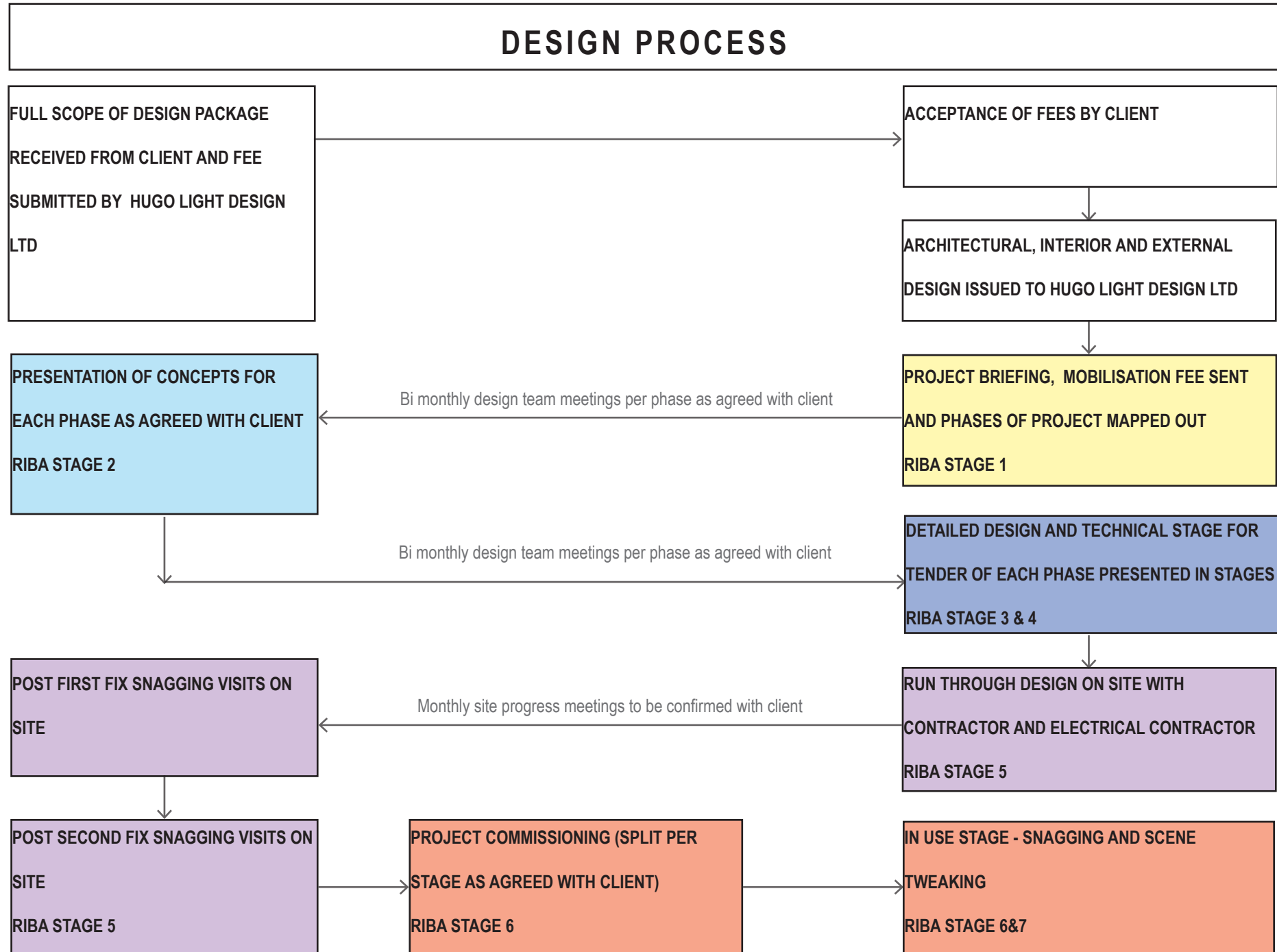
Bi monthly design team meetings per phase as agreed with client

POST FIRST FIX SNAGGING VISITS ON
SITE

Monthly site progress meetings to be confirmed with client

POST SECOND FIX SNAGGING VISITS ON
SITE
RIBA STAGE 5

PROJECT COMMISSIONING (SPLIT PER
STAGE AS AGREED WITH CLIENT)
RIBA STAGE 6



RIBA STAGE 1 - BRIEF

DESIGN BRIEFING FOR THE PROJECT INCLUDING ALL RELEVANT DESIGN TEAM MEMBERS TO DISCUSS THE FOLLOWING:

- 1: Project brief - Potentially split into phases to ensure all parts are delivered in a timely fashion.
- 2: Architectural layouts, RCP's, Sections, Elevations, details, features and finishes
- 3: Design direction communicated and set for each phase
- 4: Lighting control recommendations and preferences
- 5: Project program and Coordination into phases
- 6: Decorative design direction

HUGO LIGHT DESIGN LTD REQUIREMENTS IN .dwg AND .pdf FORMAT

- 1: Floorplans (GA's), Reflected ceiling plans (RCP's), sections, elevations and details including furniture layouts
- 2: Joinery details
- 3: Kitchen plans and elevations
- 4: Artwork locations and dimensions
- 5: Confirmation of requirements to meet local building requirements
- 6: Landscape layouts and details
- 7: Swimming pool details
- 8: AV/HVAC Requirements and coordinated drawings from M&E consultant
- 9: Project programme

RIBA STAGE 2 - CONCEPT DESIGN STAGE

HUGO LIGHT DESIGN LTD DELIVERABLES - Phases to be agreed prior to appointment:

- 1: Reference and aspirational mood images
- 2: CGI's from interior designer and landscape designer modified to nighttime visuals to convey lighting design intent - Final quantity to be determined prior to appointment
- 3: Sketch lighting details
- 4: Draft lighting layouts and basic specification images
- 5: Lighting controls Philosophy
- 6: confirmation of rack locations and driver locations throughout in accessible locations

Each Phase of the concept design will be submitted electronically and a meeting will be scheduled to run through the concepts and to finalise them prior to taking the design to detailed design tender stage.

Final quantity of phases and concept design confirmation meetings to be confirmed and to be carried out on site or through ZOOM conferencing in London with the Design Director and a Senior Designer and any other relevant parties.

SUGGESTED PHASES FOR EXAMPLE TO BE AGREED PRIOR TO APPOINTMENT DEPENDING ON SCALE OF PROJECT:

PROPERTY 1 : **PHASE 1** - Villa Amina, **PHASE 2** - Villa Elizabeth, **PHASE 3** - Pool House Spa and **PHASE 4** - Gym

PROPERTY 2 : **PHASE 5** - Villa Piera and **PHASE 6** - Villa Bella Vista

PHASE 7 - EXTERIOR HARD AND SOFT LANDSCAPE

APPROXIMATE TIMINGS:

To be confirmed with confirmation of each phase of the project.

RIBA STAGE 3 & 4 - DETAILED DESIGN STAGE

ON COMPLETION OF THE CONCEPT DESIGN STAGE AND CONFIRMATION OF THE BUDGET FOR EACH PHASE WE WILL TAKE EACH PHASE TO DETAILED DESIGN STAGE INCLUDING:

- 1: Detailed CAD plans indicating the positions of all luminaires
- 2: Coordinated lighting details illustrated through CAD showing how lighting should be integrated within joinery and architecturally
- 3: Specification cut sheets for each fitting including wiring and installation guides
- 4: Grouped driver locations and estimated areas required including recommended Low voltage cable diameters and recommended run lengths to be confirmed by the electrical contractor on site accounting for site constraints and actual cable runs.
- 5: Control schedule for the lighting circuits, loads and circuit types and confirmed control philosophy to be applied to each area (Scenes and circuit levels to be commissioned on site during the Commissioning stage)

One review of the detailed design stage including a coordinated meeting through zoom conferencing or on site for each confirmed phase. final no. of phases to be confirmed prior to appointment

One revision to each confirmed phase following the detailed design review. final no. of phases to be confirmed.

RIBA STAGE 5 - SITE SUPERVISION & MANAGEMENT

It is essential for the delivery of a successful project that a regular site presence is maintained for the duration of the implementation stage to ensure that site constraints and changing conditions are captured and incorporated into the final design correctly.

RECOMMENDED SITE VISITS:

1: project progress meetings - frequency to be confirmed prior to appointment

2: m&e contractor coordination / sample product workshop

3: lighting equipment integration with associated joinery and architectural disciplines

4: on completion of first fix for each phase a visit would be carried out to ensure that all positions were wired to correctly ahead of closing ceilings and walls and a snagging list will be prepared.

5: on completion of second fix all positions and installation checked and snagging lists prepared.

6: on going site visits to review issues as they arise and resolve due o revised room layouts, amended joinery details and any obstructions which prevent installation of luminaires.

RIBA STAGE 5 - REVISIONS

It is difficult to predict how individual projects will progress following the issue of the tender set of lighting documents. with this considered and once the concept design has been presented and revised to the agreed design, we will take the project to the detailed design stage to be issued for tender. HUGO LIGHT DESIGN Ltd will include one further revision to revision "A". any further revisions will be charged for at our standard rate and will be agreed prior to works being completed.

Reasons for revisions not limited to:

- 1: Changes to architectural layouts, joinery, m&e constraints
- 2: Change of client requirements
- 3: Discovery of constraints due to unknown findings on site

Time has been incorporated within the fee to review all joinery throughout the project and to provide standard details for the integration of luminaires within.

Suggested specifications and driver options will be made available to the joiner to incorporate within their package.

Final total quantity of equipment to be communicated to HLD to be quoted for in kit form to be delivered to associated joinery companies to be installed prior to the joinery arriving on site and to be connected to supplies on site by the site electrical contractor.

RIBA STAGE 6 - COMMISSIONING STAGE

Each phase of the project will be commissioned in relation to luminaires and the focusing of light and in association with the lighting control system, pre-setting the light scenes once all soft furnishings have been installed and spaces have been dressed.

tasks involved during commissioning:

- 1: Positions and focusing of luminaires and swapping out lenses if necessary, to control the light and snagging lists to resolve any remaining issues
- 2: Pre-setting scenes in each space through the lighting control system in association with the lighting control engineer to achieve the best possible results and to realise the clients and designers' vision.

Site visits required:

- 1: To be confirmed with final fee which will be reviewed when final phases of project are agreed.

HUGO LIGHT DESIGN Ltd can not guarantee final results or that circuits will operate correctly regarding dimming levels if alternative lighting equipment has been used.

If the lighting control system has been supplied by others an engineer will need to be present to commission each phase with HUGO LIGHT DESIGN Ltd which will need to be considered by the client as otherwise this will incur additional costs.

RIBA STAGE 6-7 - IN USE - POST HANDOVER

Once client has been in occupation for one month a site visit will be made to run through any remaining snags or programming issues with the controls engineer.

1: Positions and focusing of luminaires and swapping out lenses if necessary, to control the light and snagging lists to resolve any remaining issues

2: Pre-setting scenes in each space through the lighting control system in association with the lighting control engineer to achieve the best possible results and to realise the clients and designers vision.

Site visits required:

1: To be confirmed with final fee.

HUGO LIGHT DESIGN LTD can not guarantee final results or that circuits will operate correctly regarding dimming levels if alternative lighting equipment has been used.

If the lighting control system has been supplied by others an engineer will need to be present to commission each phase with HUGO LIGHT DESIGN LTD which will need to be considered by the client as otherwise this will incur additional costs.

STAFF ALLOCATION

DESIGN DIRECTOR AS DETAILED ABOVE
RATE: £120 PER HOUR + Vat

ASSOCIATE SENIOR DESIGNER - MR SANDRO
RASPINO

(Fluent - French, Italian (Mother tongue), English)

Rate: £90 per hour + Vat

Sandro Raspino is a loyal, well trusted and diligent employee for the past 9 years, his attention to detail and calm efficient approach to lighting design makes him a well respected and key part of HUGO LIGHT DESIGN Ltd .

2018 – Ongoing

2016 – 2018 (2 Year)

2015 - 2016 (1 Year)

2014 (7 months)

2014 (2 months)

2013 (3 months)

2013 (1 month)

2012 – 2014

2007 – 2011

2001 – 2006

Operating systems
Graphic software
Modeling software
Technical software

Italian
English
French

Sport Activities
Graphic Projects

Strengths

Designing spaces taking into account user needs and local contexts through energetic and social sustainability.

Understand spaces in order to provide an high quality project to design an enjoyable project.

Work experience and internships

Senjor Lighting Designer, Hugo Light Design LTD, London, United Kingdom.

- Development concept design with team office.
- Dialux Calculations, Presentations and office management.
- Lighting equipment specifications.
- Projects budget management.
- Organizations and management office team.

Lighting Designer, Hugo Light Design LTD, London, United Kingdom.

- Work on concept design.
- Dialux Calculations, Presentations and office management.
- Work on Lighting equipment specifications with office team.

Junior Lighting Designer, Hugo Light Design LTD, London, United Kingdom.

- Dialux Calculations, Hand Sketches and office management.
- Work on concept design with office team.

Freelancer, Hugo Light Design LTD, London, United Kingdom.

- Dialux Calculations, Hand Sketches and office management.

- Assisting, office designers presentations with Adobe Photoshop software. Freelancer, Light Bureau, London, United Kingdom.

- Dialux Calculations, Hand Sketches and office management.
- Assisting, office designers presentations with Adobe Photoshop software.

Internship, ISA_Engeneering, Turin, Italy

Workshop, “Kronach in Light”, Kronach, Germany

- Lighting design project during ‘Kronach Luechtet’ festival.

Education

Politecnico di Torino, Italy

Master in Architecture for The Sustainable Project

Politecnico di Torino, Italy

Bachelor of Science degree in Architecture for The Project.

Scientific High School ‘Cocito’, Italy

High School diploma specializing in scientific subjects.

Computer skills

Windows, MacOS

Adobe Creative Suite, Vray, Key shot

Autocad 2D, Sketch-up

Dialux, Ecotect, Solver Serre, Daysim, Termolog, Leto

Language skills

Mother tongue

Fluent

Fluent

Extracurricular activities

I used to play in various agonistic teams in Italy, now playing in amateur level.

Concept and realization of posters and logo for Municipality of La Morra Italy.

Very passionate in freehand drawings and new representation techniques

STAFF ALLOCATION

JUNIOR DESIGNER/CAD OPERATOR

RATE: £65 PER HOUR + Vat

CONTACT INFORMATION

HUGO LIGHT DESIGN Ltd

UNIT 40, BATTERSEA BUSINESS CENTRE
99-109 LAVENDER HILL
LONDON
SW11 5QL

PRINCIPLE : MR HUGO FLEMING

O: +44 (0) 20 7924 4504

M: +44 (0) 7970 291 411

E: hugo@hugolightdesign.com

PRACTICE PROFILE - HOTEL/RESTAURANT



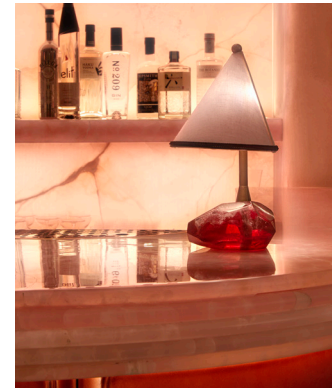
CLARIDGE'S Brasserie

HUGO LIGHT DESIGN Ltd worked closely with Bryan O'Sullivan Studio and Blair Associates Architecture Ltd to deliver unobtrusive lighting to the restaurant accentuating the key Art Deco features of the building and interior design which had previously been lost in the past. Working with black and white photo's from the 1950's and updating, re-creating and celebrating key listed features within the space while concealing the light sources as much as possible within.

Doors to the kitchen and PDR play an important role as a focal point within the space with the elaborate illuminated coloured Glass architrave surround.



PRACTICE PROFILE - HOTEL/RESTAURANT



THE RED ROOM @ THE CONNAUGHT

The Red Room is a speakeasy hidden within The Connaught Hotel, sandwiched between the Cigar bar on Mount Street and the hotel. This room has no natural daylight so it was of the utmost importance that it did not feel gloomy. The space takes inspiration from a series of Louise Bourgeois pieces collected by the client. Letting the artworks lead, we imagined the space to feel like the guest was sitting in the living room of an art collector. The furniture, a blend of studio originals and midcentury finds, is eclectic and relaxed.

PRACTICE PROFILE - HOTEL/RESTAURANT

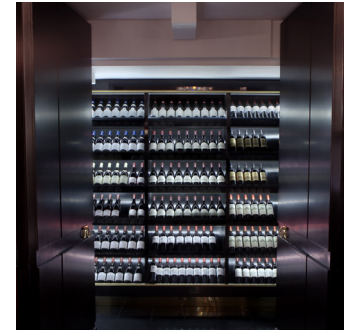


IXCHEL RESTAURANT - 33 KINGS ROAD

NAMED AFTER THE MAYAN GODDESS OF THE MOON, IXCHEL IS A 170 COVER MODERN MEXICAN RESTAURANT AND TEQUILA BAR SITUATED ON THE KINGS ROAD, CHELSEA. WE WORKED WITH BEHIND THE DOOR DESIGN AND THE NANU GROUP TO REALISE THE DESIGN FOR THIS SPACE WHICH GIVES THE RELAXED AND UNPRETENTIOUS AIR OF TULUM USING INDIRECT SOFT AND SHADOWLESS LIGHT AND PIN SPOTS TO ILLUMINATE



PRACTICE PROFILE - HOTEL RESTAURANT



THE SAVOY GRILL

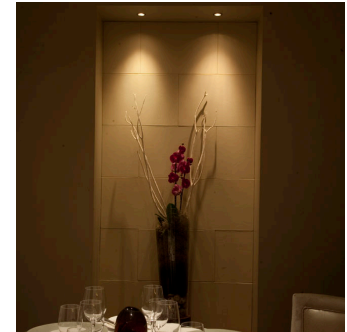
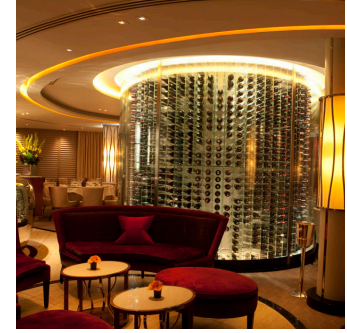
Working with Russell Sage Studio concepts were put together to bring the tired grill restaurant and private dining room on the first floor back to its former glory celebrating all the history at the Savoy.

Existing wall and ceiling mounted luminaries were removed and re-conditioned and Swarovski were commissioned to design and make the four main chandeliers within the space.

Bespoke luminaries were also commissioned to be incorporated onto the Banquette seating areas and we worked with Isabel Hamm Design to create bespoke wall sconces and a matching Chandelier for the private dining room upstairs.



PRACTICE PROFILE - HOSPITALITY

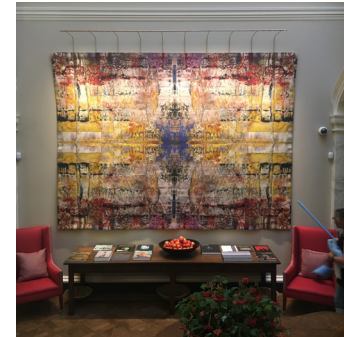


PETRUS

Working with Russell Sage Studio concepts were put together to convert the ground floor of these purpose built apartments on Kinnerton Street into a contemporary restaurant. The interior hails back to ocean liner chic oozing opulent style focusing around a central feature wine store housing the famous "Petrus" wine constructed of glass from floor to ceiling. The brief was to achieve an almost "candle lit" interior with focussed light to tables to create an intimate dining experience. Due to low energy regulations at the time this was particularly difficult to achieve but the restaurant is still open and busy now 14 years on!



PRACTICE PROFILE - HOSPITALITY



MAIN HOUSE

Full refurbishment with Susie Atkinson Design and Nicola Harding & Co and Colwyn Foulkes Architects. This Victorian neo-classical mansion and estate into a 5 Star hotel with 18 unique bedroom suites and public areas, including:

restaurant, morning room, cinema, parrot bar and private dining room and a separate house and cottages called Garden House.

The heavily listed, Grade 1 nature of the building meant that a wireless control system had to be used to reduce the amount of chasing of wires but we were able to transform the interior into a magical space at night illuminating architectural features and boosting light levels. The final icing on the cake was a Gerhard Richter tapestry which was illuminated beautifully by a TM Lighting Slim Light Pro.

PRACTICE PROFILE - HOSPITALITY

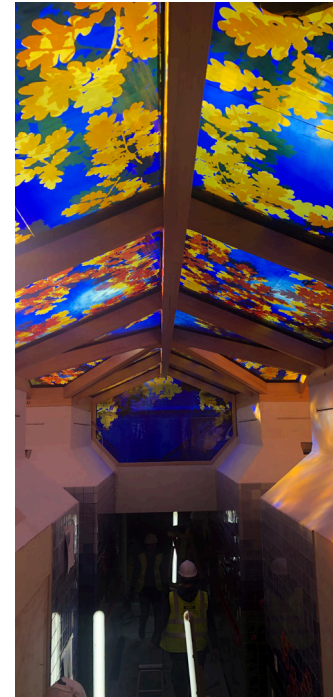


BEAVERBROOK SPA AND POOL - PART 1

Full refurbishment and implementation of this 18th century Coach House and stable buildings to offer all the modern comforts of a spa and healthclub including a cafe/restaurant, retail , thermal spa and treatment rooms designed in collaboration with Colwyn Foulkes Architects and Brian Clarke Design "Bringing the outside in"



PRACTICE PROFILE - HOSPITALITY PROJECT



BEAVERBROOK
SPA AND POOL - PART 2



PRACTICE PROFILE - HOSPITALITY

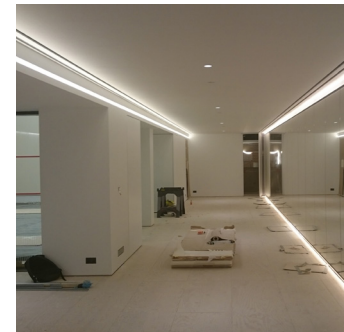
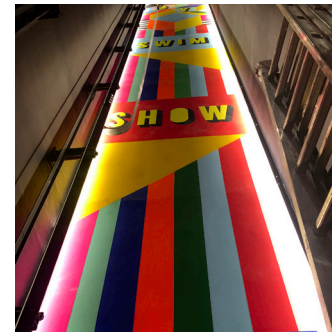
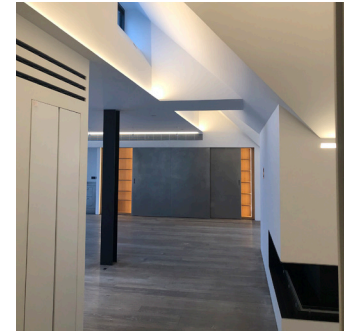
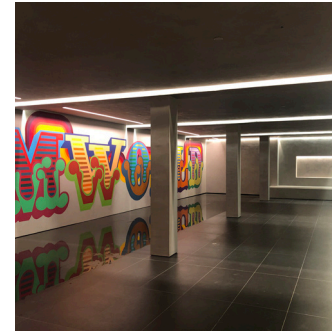


BEAVERBROOK GOLF & COUNTRY CLUB

A Luxurious oak framed new build Golf Club House nestled within the landscape looking out at the Mole Valley, we worked hand in hand with the very talented Susie Atkinson Design team and Fletcher Priest Architects to achieve a Sophisticated but relaxed space with rich natural finishes accompanied with contemporary twists to create a comfortable space with sophisticated and understated charm.



PRACTICE PROFILE - RESIDENTIAL - CONTEMPORARY



67-69 CADOGAN GARDENS

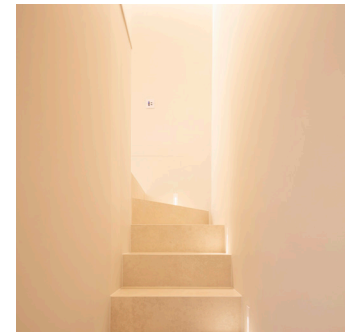
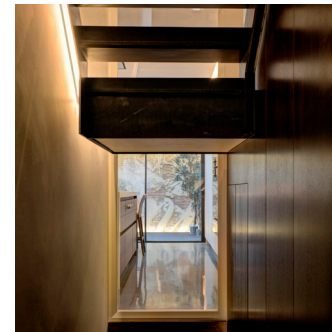
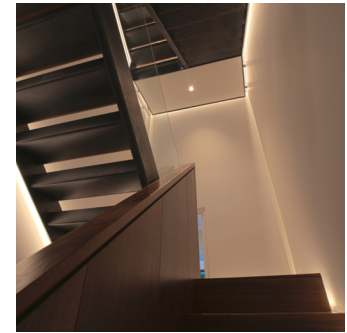
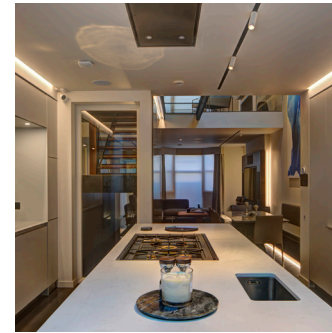
A collaborating with Kyson Architects and Cigue Architects in Paris this double front, 20K square foot traditional red brick property incorporating 3 basements, lower ground, ground, 1st, 2nd, 3rd and 4th floors leads you from a traditional setting near sloane square into an unexpected, minimal open plan world.

Lines of lights are use to emphasize the shapes and dimension of these spaces.

Remote controlled spotlights have been installed on the living room spaces to light on artworks.



PRACTICE PROFILE - RESIDENTIAL - CONTEMPORARY

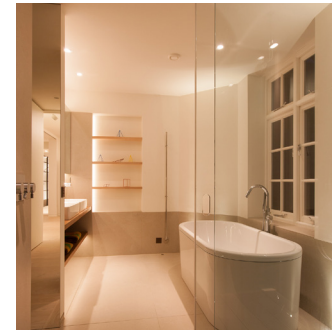


REDBURN STREET

Collaborating with Goldstein Ween Architects with a small budget for a large residence the brief was to create a “calm amongst the storm” of London and a tranquil uncluttered hotel experience. We worked on opening up spaces to create vistas through all spaces accentuated with natural daylight and supplemented with artificial light concealed within the architecture of the building as much as possible creating a narrative that draws you through the house with glimpses of the next surprise in store leading you through the house.



PRACTICE PROFILE - RESIDENTIAL - CONTEMPORARY

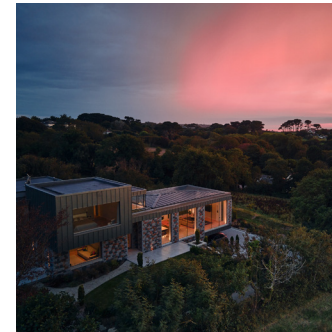
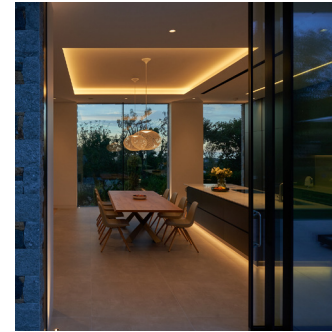


ERESBY HOUSE

Collaborating with Goldstein Ween Architects two penthouses in Knightsbridge were converted into one transforming what was a "Rabbit warren of small un connected rooms into an open plan light and airy space . Once again using linear light sources concealed within the architecture of the building providing reflected light back into the spaces for a shadowless indirect light which creates the illusion of the spaces being larger. This was then accentuated by track mounted directional gallery grade spotlights to illuminate artwork and sculpture.



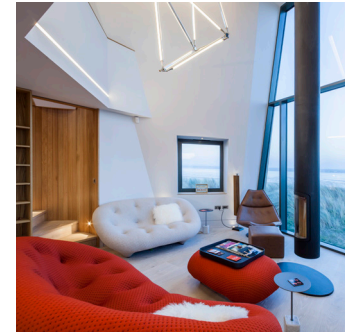
PRACTICE PROFILE - RESIDENTIAL - CONTEMPORARY



ARCO IRIS HOUSE - JERSEY

After spending a great deal of time finding a plot of land in Guernsey to develop and painstakingly obtaining the planning consent through clever use of the natural materials on the site and being sensitive to the surrounding area and topography Studio Otto and Hugo Light Design Ltd worked together to integrate concealed lighting within the fabric of the building as much as possible from planning stage until completion. This ensured the lighting was not only unexpected and considered but also created a language that runs through the entire house avoiding the "Bolt ons" which look like an after thought. The client had fantastic taste in decorative pendants which accentuate the clean modernity that both Studio Otto and Hugo Light Design strive for rather than detracting from the carefully chosen material palette and nuances in colour.

PRACTICE PROFILE - RESIDENTIAL - CONTEMPORARY



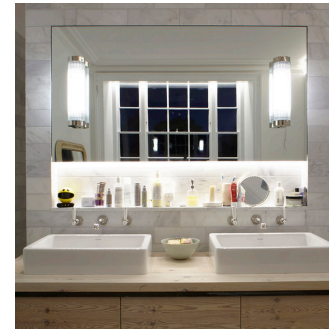
GREATSTONE

Collaborating with CZWG Architects this steel framed house which demanded a bespoke finish to almost all areas was a pleasure to be working on! With 270 degree views of the ocean and the beach on the Kent coast the house nestles amongs the dunes providing a welcome break from London at the weekends.

Special attention it is been taken to emphasize the geometry and shapes of this building and to compliment the angular nature of the building a bespoke KINETICA pendant was commissioned by us HLD as the icing on the cake!



PRACTICE PROFILE - RESIDENTIAL - CONTEMPORARY



MAYFIELD HOUSE

Collaborating with Goldstein Ween Architects with a small budget for a large residence we were able to achieve spectacular results through concealing luminaries within the architecture of this Edwardian property and using an honest approach to materials.

Energy consumption was reduced by 4/5ths through the use of low energy light sources which achieved much greater light levels than were existing creating a very light and airy feel to these larger than average spaces.



PRACTICE PROFILE - RESIDENTIAL - CONTEMPORARY



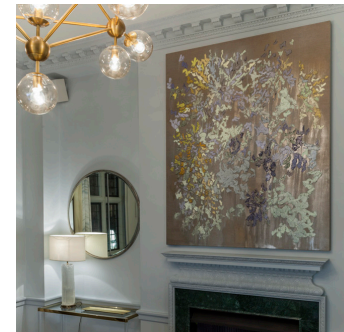
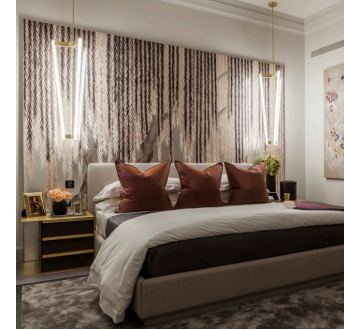
WESTOVER ROAD

This was a refurbishment of an existing semi detached Victorian house converted to a contemporary modern style, in addition to this a modern extension was added to the Kitchen/Dining/Living hub and the lower ground floor and basement.

In the modern extension the large open plan spaces are partitioned or linked together using the lighting scenes creating focus in different areas depending on the required use.



PRACTICE PROFILE - RESIDENTIAL - TRADITIONAL

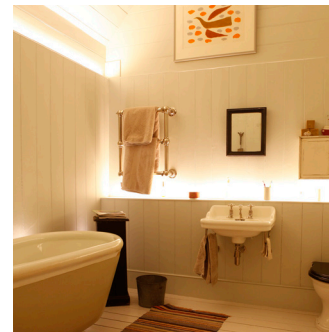


MOUNT STREET

This traditional apartment located in Mayfair was subject to very strict planning, traditional architectural features have been highlighted and where light levels have needed to be boosted the linear sources have been concealed from view working with reflected light off ceilings and indirect light from in ground uplights. In addition to this the interior designer Amelia Carter Interiors uses a very subtle pallet of colour so when chosing light sources great care was taken to ensure a high colour rendering was achieved and a true rendition of the colour in the interior was experienced.



PRACTICE PROFILE - RESIDENTIAL - TRADITIONAL



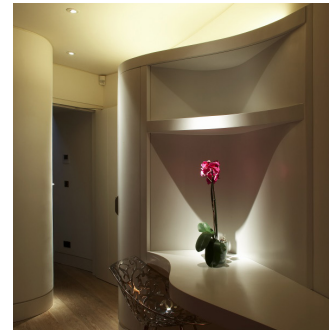
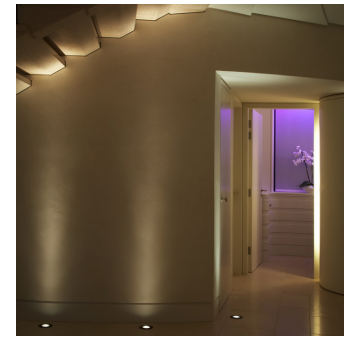
ALWYNE PLACE

This residential victorian terraced house completed with Nicola Harding Design was re-developed highlighting period features and concealing luminaries as much as possible.

Bespoke pendants were made for this project, up lights were used in the window reveals to provide light to the period shutters and cornice throughout, reclaimed desk and floor lamps were re-conditioned and used, led strips were concealed above panelling, within shelving and within the base of the window reveals for indirect boosts of light.



PRACTICE PROFILE - RESIDENTIAL - TRADITIONAL

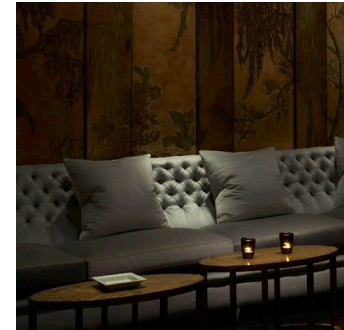
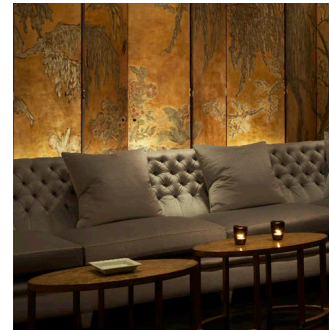
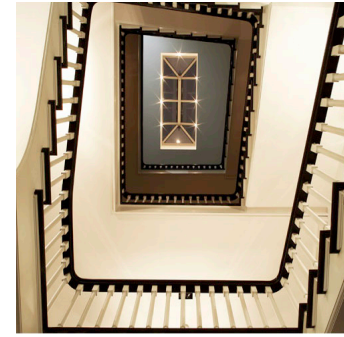
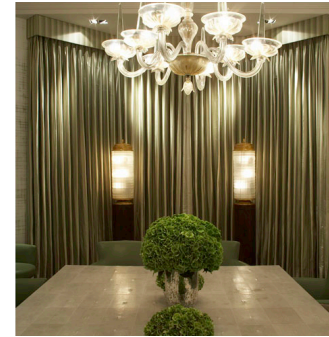
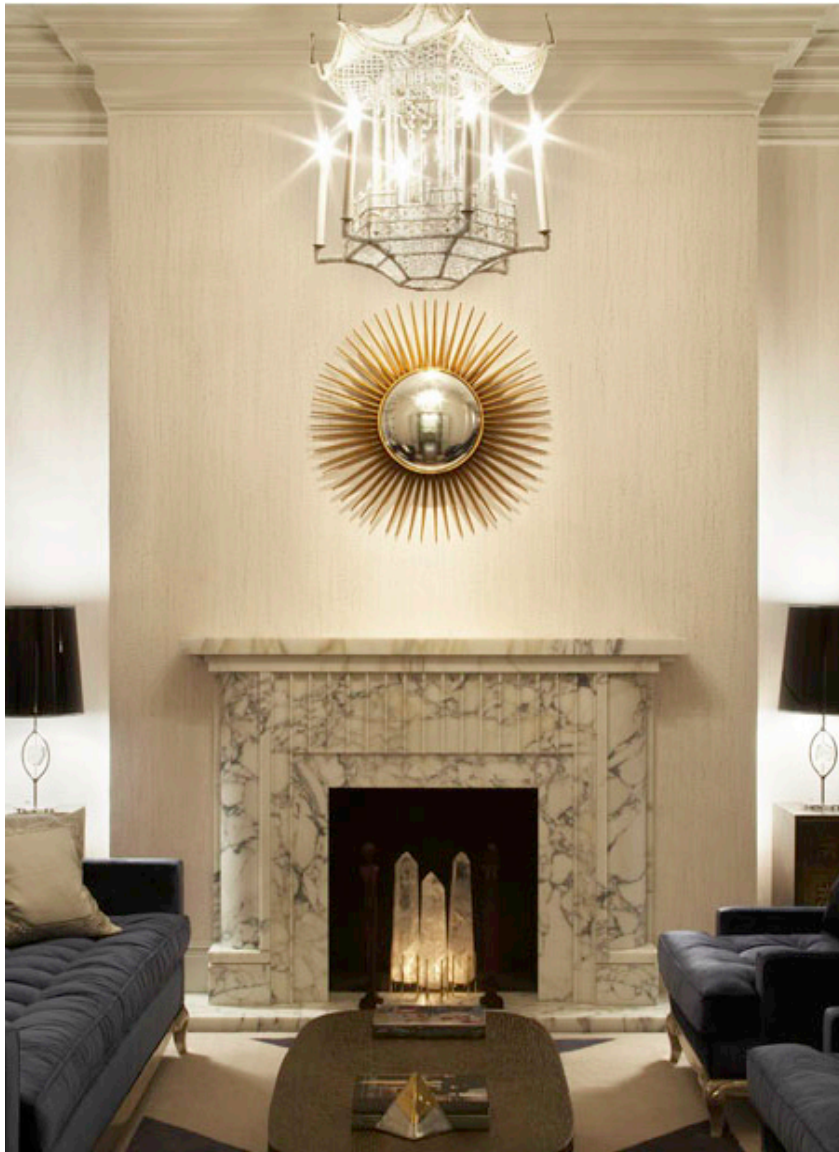


ADMIRAL LODGE

Collaborating with David Colins Design no expense was spared on this lavish interior using only the best possible materials. Luminaires were designed and manufactured bespoke for the project to create a very dramatic exciting space.



PRACTICE PROFILE - RESIDENTIAL - TRADITIONAL



HOLLAND PARK

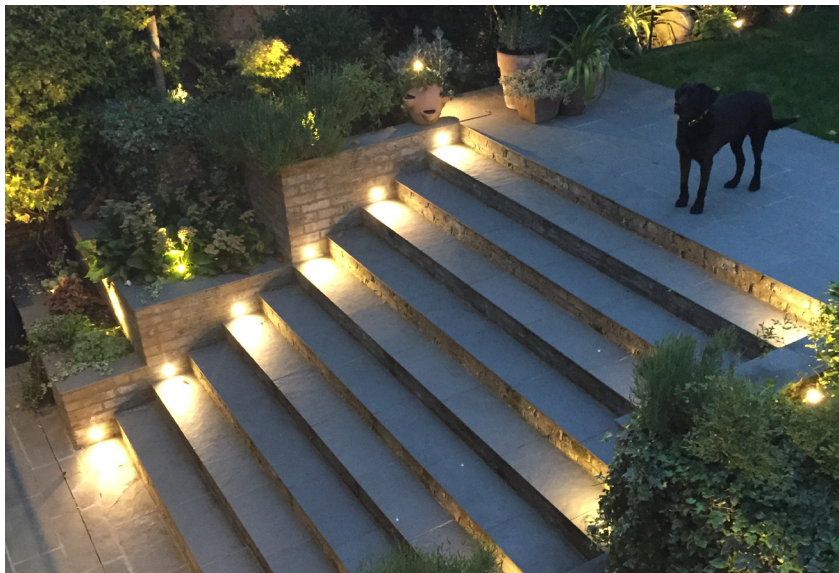
Private residence in Central London completed with David Collins Interior Design.

Major refurbishment and fit-out to a high level of design, using the traditional features of the building to conceal low energy light sources.

The integrated lighting scheme included the basement swimming pool gym and sauna, ground floor, first floor second floor and third floor integrating a state-of-the-art wireless control system to reduce the cost of the electrical work.



PRACTICE PROFILE - LANDSCAPE & EXTERIOR

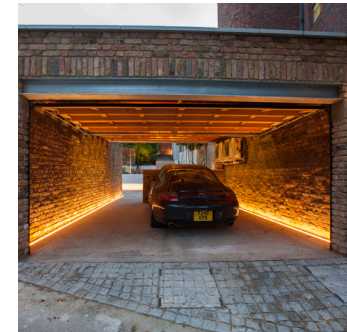
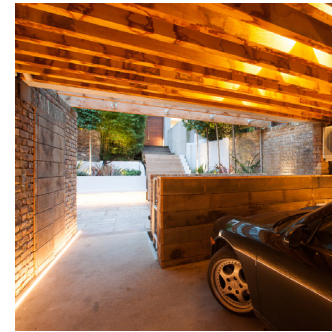
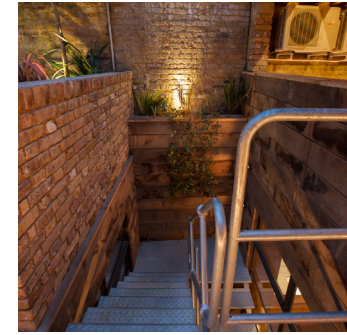
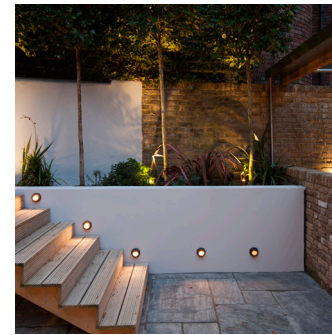
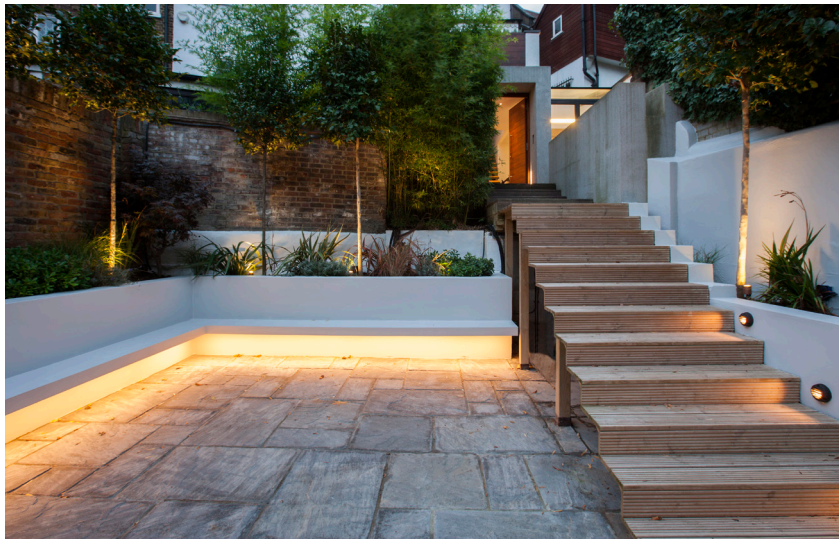


BOLLINGBROKE GARDEN

This beautifully designed garden illustrates the principles of exterior lighting, layering light from various sources providing depth and pockets of interest throughout the garden, from task light to steps, low level glow to planting in borders, spiked luminaires to provide washes of light to mid height planting, larger sources concealed to uplight more substantial specimens and twinkling starlighters within the canopies of larger trees to provide some magic.



PRACTICE PROFILE - LANDSCAPE & EXTERIOR



7 RICHMOND HILL

Collaborating with Goldstein Ween Architects this small house cascades down the side of Richmond Hill almost in terraces accentuated with concealed light sources which accentuate the materials used. Beneath the garden there is a Gym and changing room. This project was completed within three months and was on a very limited budget but was operated through a wireless system connected to motion sensors to create a path of light up to the house from driving into the garage.



PRACTICE PROFILE - LANDSCAPE & EXTERIOR



PRIVATE RESIDENT - HAMPSTED

Private residence in north London completed with MAKE architects.

Major refurbishment, extension and fit-out to a high level of design on a contemporary basis.

The integrated lighting scheme included the extension, facade and exterior and a state-of-the-art control system.



PRACTICE PROFILE - LANDSCAPE & EXTERIOR



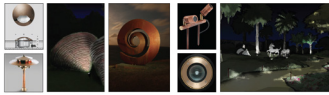
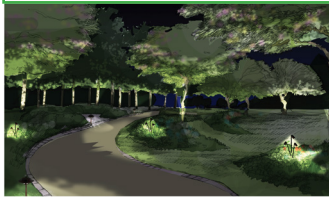
POPHLEYS

Large external lighting design scheme located in Oxfordshire and completed in collaboration with Randle Siddley Associates - Landscape Architects.

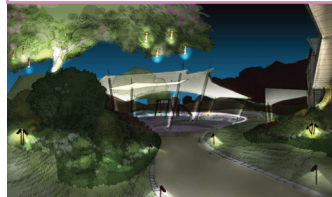


PRACTICE PROFILE - MASTER PLANNING

AREA 1 SOUTHERN LAWN



AREA 2 FAMILY AREA



AREA 3 PRIMARY VISTA



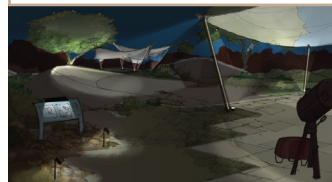
AREA 4 FORMAL GARDEN



AREA 5 SOFT LANDSCAPE



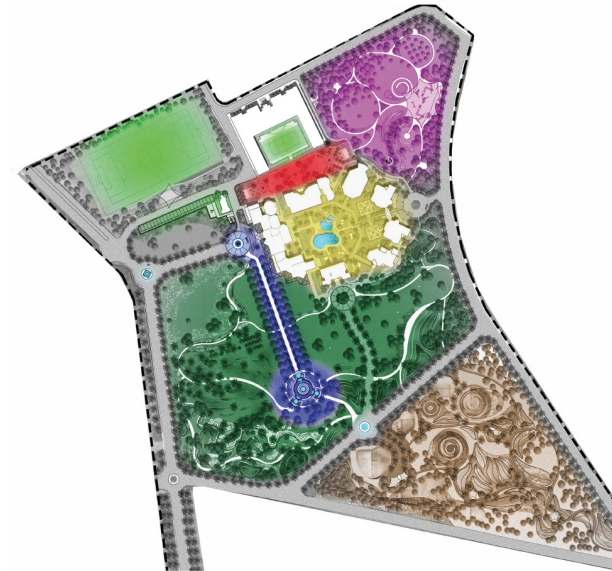
AREA 6 BOTANICAL GARDENS



UMM QURAIBA FARM

PHASE 1 - FOCAL AREAS

- AREA 1
SOUTHERN LAWN
- AREA 2
FAMILY AREA
- AREA 3
PRIMARY VISTA
- AREA 4
FORMAL GARDEN
- AREA 5
GLADE & SOFT LANDSCAPING
- AREA 6
BOTANICAL GARDENS
- AREA 7
FOUNTAINS AND WATER
FEATURES BY OTHERS

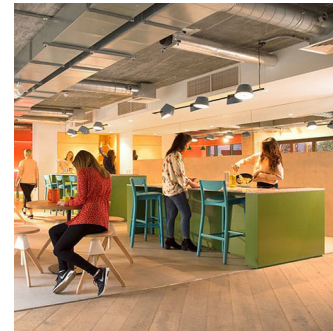
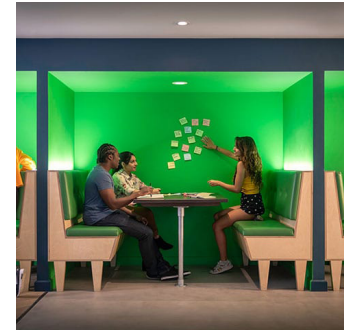


UMM QUARAIBA FARM

This was a master plan of the lighting for a residence in Doha incorporating various different areas and a strategy of linking the areas together through the use of light. The plot was located in the desert and is a stand alone residence with its own power plant. Completed with Randle Siddeley Associates - Landscape architects



SCAPE APEX HOUSE - STUDENT HOUSING



SCAPE APEX HOUSE

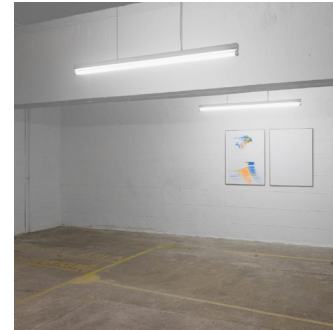
Scape Living are market leaders in providing high quality studios and shared accommodation for today's discerning students.

By putting community in the middle of the design philosophy, their concept is to make students feel inspired, safe and more connected to each other during their student life.

We worked with Nicola Harding & Co. to realise a playful approach to the lighting ensuring adequate and shadowless light levels throughout were achieved.



PRACTICE PROFILE - MUSEUM & EXHIBITIONS



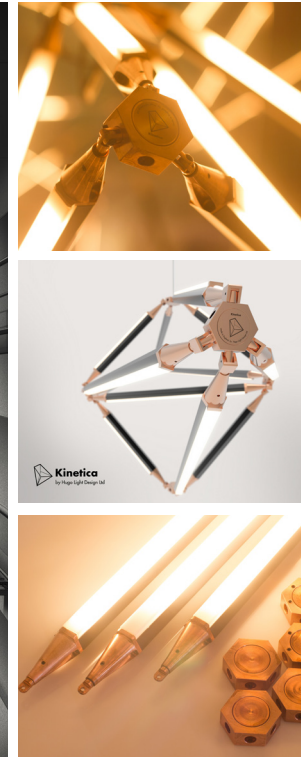
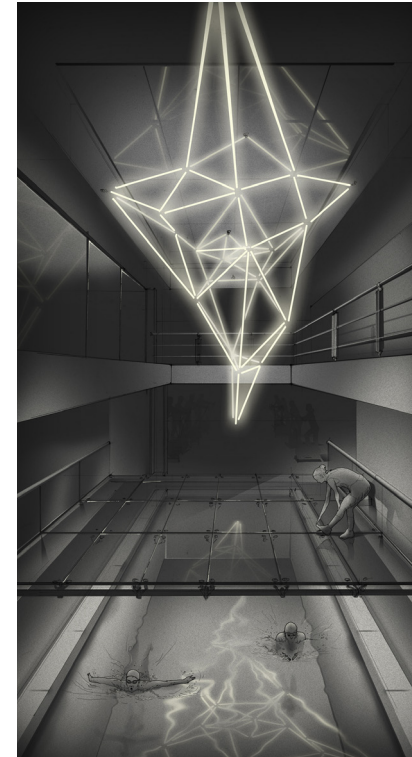
PM/AM GALLERY

Founded in early 2015, PM/AM is a contemporary art and project space which used to be a subterranean car park, dedicated to supporting artist, curators and collectors.

The project it is been created with a low budget but without forgetting the quality of fitting used. The colour rendering of the light sources was essential to light the artwork to ensure the colours "POP" and indirect have been used to light up the ceiling to boost the general light levels to the space.



PRACTICE PROFILE - BESPOKE PRODUCT DESIGN



KINETICA - THE THIRD SPACE

Kinetica is a bespoke system capable of generating unique and potentially interactive light sculptures tailored to any space or environment. Every Kinetica component is carefully customised to each individual space and client based on our expert understanding of the multiple interactions between light, architecture and human behaviour.

The possibilities achievable with the Kinetica system through LED technology, lighting control and motion and sound interaction are limitless.



PRACTICE PROFILE - BESPOKE PRODUCT DESIGN



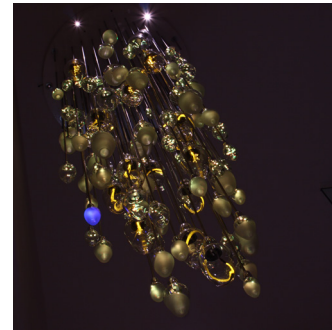
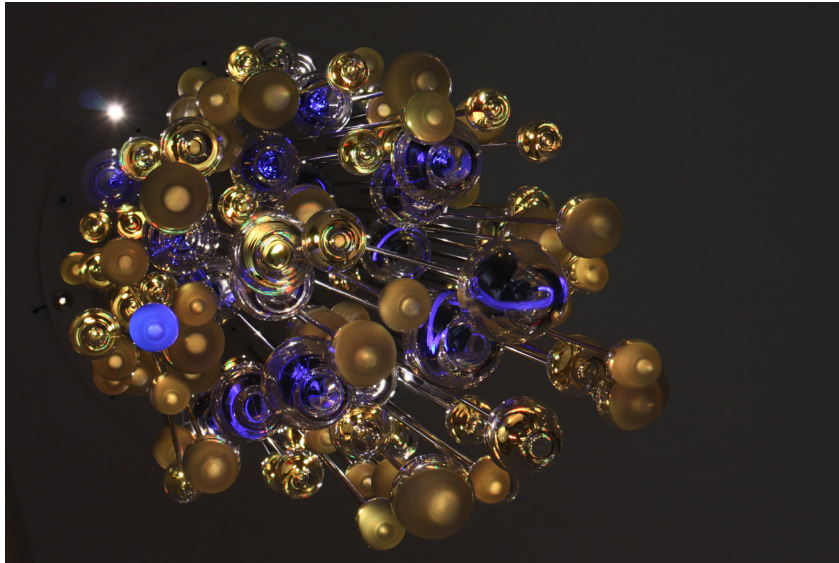
KINETICA - WALL LIGHT

Kinetica is a bespoke system capable of generating unique and potentially interactive light sculptures tailored to any space or environment.

With MKD we created customised components and realized a wall light.



PRACTICE PROFILE - BESPOKE PRODUCT DESIGN

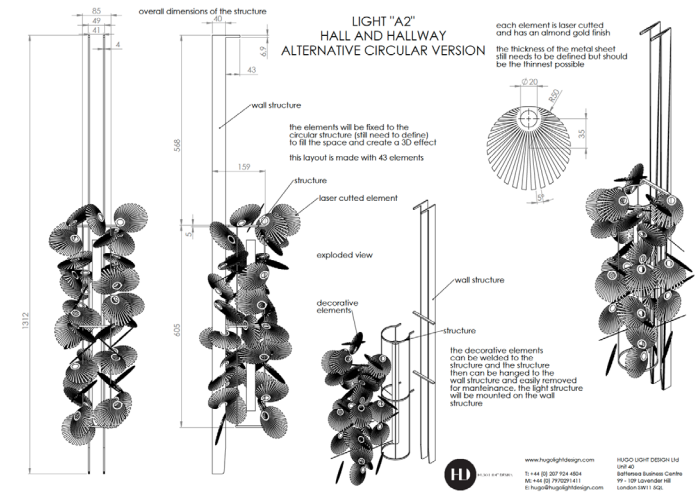
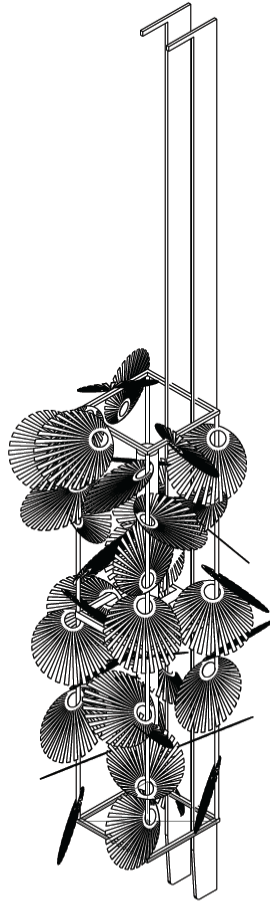


Colourcopia chandelier for OPI

Completed with Quadrant Design Architects and Colourcopia Apointed to design a 3.5m x 1m chandelier based around an OPI nail varnish bottle and the associated colour range. Fibre optic colour change lighting and LED colour change lighting incorporated into 150 hand blown clear glass bottles suspended from stainless steel tubes and base allowing colour change sequences of the clients choice and ensuring long life light sources are used to reduce maintenance in this 8 meter high space.



PRACTICE PROFILE - BESPOKE PRODUCT DESIGN



BESPOKE WALL LIGHT

Collaborating with MKD with a small budget for a bespoke wall light to match the rich and luxury interiors of a private residence.





HUGO LIGHT DESIGN

CONTACT INFORMATION

**HUGO LIGHT DESIGN LTD
UNIT 40
BATTERSEA BUSINESS CENTRE
99-109 LAVENDER HILL
LONDON
SW11 5QL**

PRINCIPLE/DESIGN DIRECTOR : HUGO FLEMING

**o: +44 (0) 20 7924 4504
m: +44 (0) 7970 291 411
e: hugo@hugolightdesign.com
w: www.hugolightdesign.com**